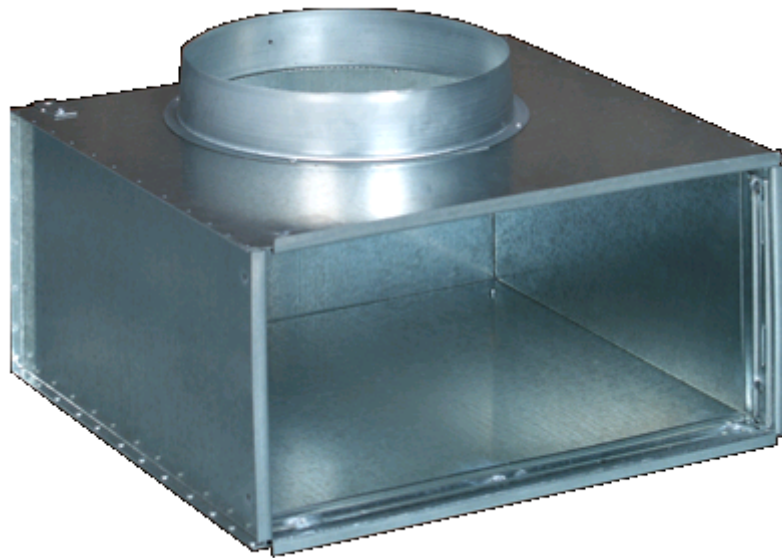


MADEL



PLRX, PLRO, & PMIS plenum box for grilles and multi-jet nozzles



MADEL

Plenum box with circular connection for grilles and multi-jet nozzles. It includes mounting frame and supports to hang from the ceiling. Made in galvanised steel.

CLASSIFICATION

PLRX Plenum box with circular upper connection, suitable for grilles AMT, CTM, LMT, DMT, RMT and multi-jet nozzle KOO, with (S) fixing for wall mounting.

PLRO Plenum box with circular upper connection, suitable for grilles AMT-AC, LMT, DMT and RMT with (O) fixing for ceiling mounting.

Suitable for LMT lengths > 2 m for wall or ceiling mounting.

PMIS Plenum box with circular upper connection, suitable for grilles LMT-MISS with (S) fixing for wall mounting.

.../L Plenum box with a lateral circular connection.

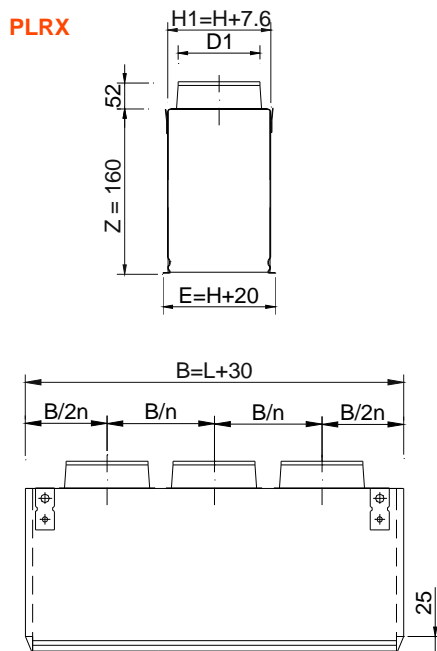
...-R Plenum box with a flow damper in the spigot.

.../AIS/ Plenum box thermoacoustically insulated by a foam with a coefficient of thermal conductivity of 0,04 w/mk. This foam complies with the fire reaction specifications:

UNE 23-727 M2

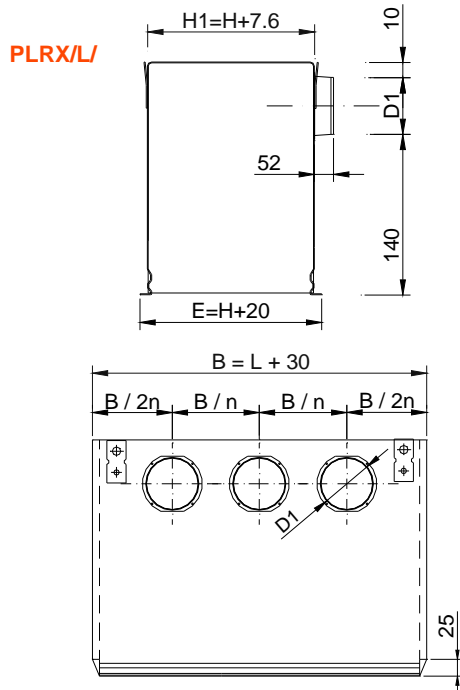
NFP 92-501 M2

DIN 4102 M2



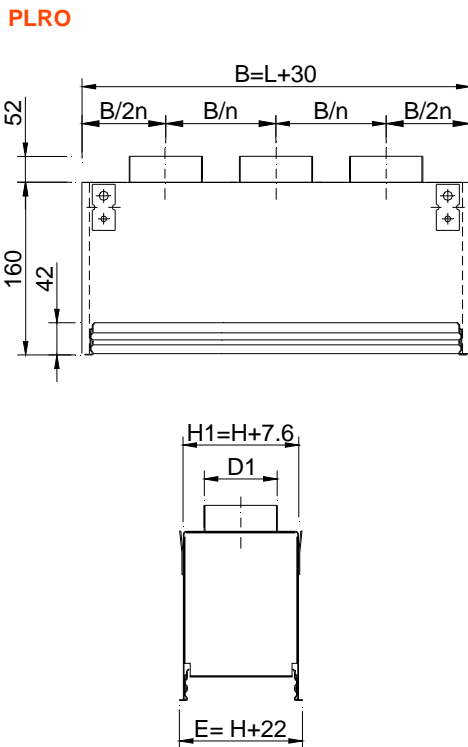
mm		connections / \varnothing					
L \ H	75	100	125	150	200	250	300
200	1/61	1/98	1/123	1/123	1/198	-	-
250	1/61	1/98	1/123	1/123	1/198	1/198	-
300	2/61	1/98	1/123	1/123	1/198	1/248	1/248
350	2/61	1/98	1/123	1/123	1/198	1/248	1/248
400	2/61	1/98	1/123	1/123	1/198	1/248	1/248
450	2/61	1/98	1/123	1/123	1/198	1/248	1/248
500	2/61	1/98	1/123	1/123	1/198	1/248	1/248
600	2/61	2/98	2/123	2/123	1/198	1/248	1/248
700	3/61	2/98	2/123	2/123	1/198	1/248	1/248
750	3/61	2/98	2/123	2/123	1/198	1/248	1/248
800	3/61	2/98	2/123	2/123	1/198	1/248	1/248
900	3/61	2/98	2/123	2/123	2/198	1/248	1/248
1000	4/61	2/98	2/123	2/123	2/198	1/248	2/248
1050	4/61	2/98	2/123	2/123	2/198	1/248	2/248
1200	4/61	3/98	3/123	3/123	2/198	2/248	2/248
1400	5/61	3/98	3/123	3/123	2/198	2/248	2/248
1600	6/61	4/98	3/123	4/123	2/198	2/248	2/248
1800	6/61	4/98	4/123	4/123	3/198	2/248	2/248
2000	6/61	4/98	4/123	4/123	3/198	2/248	3/248

$$V_{\text{free}} = V_k / 3$$



mm		connections / Ø					
L \ H	75	100	125	150	200	250	300
200	1/98	1/123	1/123	1/158	1/198	-	-
250	1/123	1/123	1/158	1/198	1/198	1/198	-
300	1/123	1/158	1/158	1/198	1/198	1/198	1/248
350	1/123	1/158	1/158	1/198	1/198	1/248	1/248
400	1/123	1/158	1/198	1/198	1/248	1/248	1/248
450	1/158	1/198	1/198	1/198	1/248	1/248	1/313
500	1/158	1/198	1/198	1/198	1/248	1/248	1/313
600	1/158	1/198	1/198	2/198	1/248	1/248	1/313
700	2/158	2/198	2/198	2/198	2/198	2/248	2/248
750	2/158	2/198	2/198	2/198	2/198	2/248	2/248
800	2/158	2/198	2/198	2/198	2/198	2/248	2/248
900	2/158	2/198	2/198	2/198	2/248	2/248	2/313
1000	2/158	2/198	2/198	2/198	2/248	2/248	2/313
1050	2/158	2/198	2/198	2/198	2/248	2/248	2/313
1200	3/158	3/198	3/198	3/198	3/198	3/248	3/313
1400	3/158	3/198	3/198	3/198	3/198	3/248	3/313
1600	3/158	3/198	3/198	3/198	3/248	3/248	3/313
1800	4/158	4/198	4/198	4/198	4/248	4/248	3/313
2000	4/158	4/198	4/198	4/198	4/248	4/248	4/313

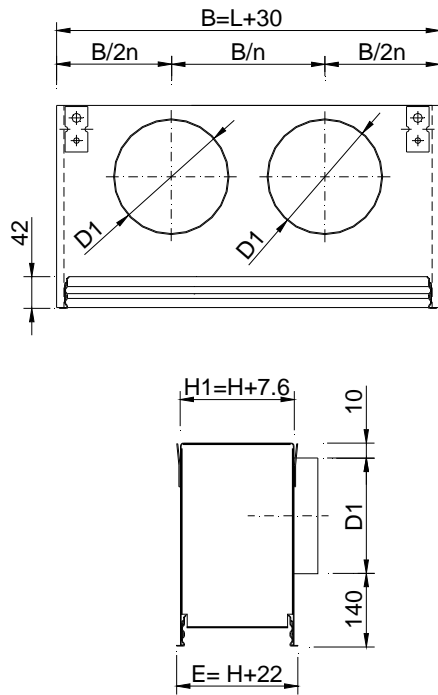
V free = V_k



mm		connections / Ø					
L \ H	75	100	125	150	200	250	300
200	1/61	1/98	1/123	1/123	1/198	-	-
250	1/61	1/98	1/123	1/123	1/198	1/198	-
300	2/61	1/98	1/123	1/123	1/198	1/248	1/248
350	2/61	1/98	1/123	1/123	1/198	1/248	1/248
400	2/61	1/98	1/123	1/123	1/198	1/248	1/248
450	2/61	1/98	1/123	1/123	1/198	1/248	1/248
500	2/61	1/98	1/123	1/123	1/198	1/248	1/248
600	2/61	2/98	2/123	2/123	1/198	1/248	1/248
700	3/61	2/98	2/123	2/123	1/198	1/248	1/248
800	3/61	2/98	2/123	2/123	1/198	1/248	1/248
900	3/61	2/98	2/123	2/123	2/198	1/248	1/248
1000	4/61	2/98	2/123	2/123	2/198	1/248	2/248
1200	4/61	3/98	3/123	3/123	2/198	2/248	2/248
1400	5/61	3/98	3/123	3/123	2/198	2/248	2/248
1600	6/61	4/98	3/123	4/123	2/198	2/248	2/248
1800	6/61	4/98	4/123	4/123	3/198	2/248	2/248
2000	6/61	4/98	4/123	4/123	3/198	2/248	3/248

V free = V_k / 3

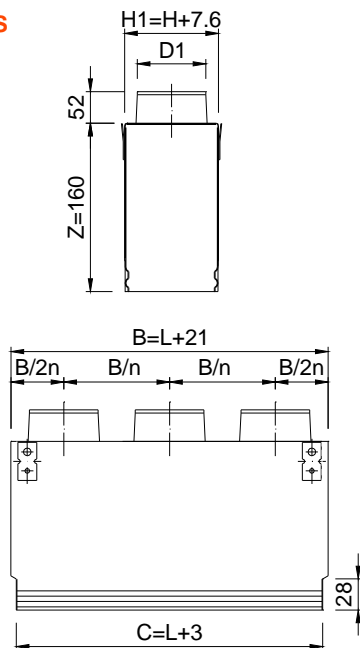
PLRO/L



mm		connections / Ø					
L \ H	75	100	125	150	200	250	300
200	1/98	1/123	1/123	1/158	1/198	-	-
250	1/123	1/123	1/158	1/198	1/198	1/198	-
300	1/123	1/158	1/158	1/198	1/198	1/198	1/248
350	1/123	1/158	1/158	1/198	1/198	1/248	1/248
400	1/123	1/158	1/198	1/198	1/248	1/248	1/248
450	1/158	1/198	1/198	1/198	1/248	1/248	1/313
500	1/158	1/198	1/198	1/198	1/248	1/248	1/313
600	1/158	1/198	1/198	2/198	1/248	1/248	1/313
700	2/158	2/198	2/198	2/198	2/198	2/248	2/248
800	2/158	2/198	2/198	2/198	2/198	2/248	2/248
900	2/158	2/198	2/198	2/198	2/248	2/248	2/313
1000	2/158	2/198	2/198	2/198	2/248	2/248	2/313
1200	3/158	3/198	3/198	3/198	3/198	3/248	3/313
1400	3/158	3/198	3/198	3/198	3/198	3/248	3/313
1600	3/158	3/198	3/198	3/198	3/248	3/248	3/313
1800	4/158	4/198	4/198	4/198	4/248	4/248	3/313
2000	4/158	4/198	4/198	4/198	4/248	4/248	4/313

V free = Vk

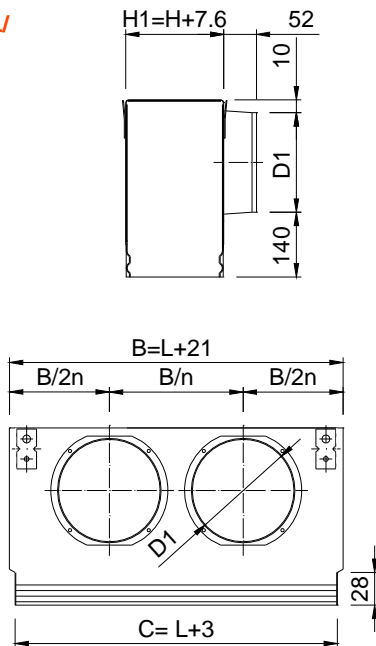
PMIS



mm		connections / Ø					
L \ H	75	100	125	150	200	250	300
200	1/61	1/98	1/123	1/123	1/198	-	-
250	1/61	1/98	1/123	1/123	1/198	1/198	-
300	2/61	1/98	1/123	1/123	1/198	1/248	1/248
350	2/61	1/98	1/123	1/123	1/198	1/248	1/248
400	2/61	1/98	1/123	1/123	1/198	1/248	1/248
450	2/61	1/98	1/123	1/123	1/198	1/248	1/248
500	2/61	1/98	1/123	1/123	1/198	1/248	1/248
600	2/61	2/98	2/123	2/123	1/198	1/248	1/248
700	3/61	2/98	2/123	2/123	1/198	1/248	1/248
800	3/61	2/98	2/123	2/123	1/198	1/248	1/248
900	3/61	2/98	2/123	2/123	2/198	1/248	1/248
1000	4/61	2/98	2/123	2/123	2/198	1/248	2/248
1200	4/61	3/98	3/123	3/123	2/198	2/248	2/248
1400	5/61	3/98	3/123	3/123	2/198	2/248	2/248
1600	6/61	4/98	3/123	4/123	2/198	2/248	2/248
1800	6/61	4/98	4/123	4/123	3/198	2/248	2/248
2000	6/61	4/98	4/123	4/123	3/198	2/248	3/248

V free = Vk / 3

PMIS/L/



mm	connections / \varnothing						
L \ H	75	100	125	150	200	250	300
200	1/98	1/123	1/123	1/158	1/198	-	-
250	1/123	1/123	1/158	1/198	1/198	1/198	-
300	1/123	1/158	1/158	1/198	1/198	1/198	1/248
350	1/123	1/158	1/158	1/198	1/198	1/248	1/248
400	1/123	1/158	1/198	1/198	1/248	1/248	1/248
450	1/158	1/198	1/198	1/198	1/248	1/248	1/313
500	1/158	1/198	1/198	1/198	1/248	1/248	1/313
600	1/158	1/198	1/198	2/198	1/248	1/248	1/313
700	2/158	2/198	2/198	2/198	2/198	2/248	2/248
800	2/158	2/198	2/198	2/198	2/198	2/248	2/248
900	2/158	2/198	2/198	2/198	2/248	2/248	2/313
1000	2/158	2/198	2/198	2/198	2/248	2/248	2/313
1200	3/158	3/198	3/198	3/198	3/198	3/248	3/313
1400	3/158	3/198	3/198	3/198	3/198	3/248	3/313
1600	3/158	3/198	3/198	3/198	3/248	3/248	3/313
1800	4/158	4/198	4/198	4/198	4/248	4/248	3/313
2000	4/158	4/198	4/198	4/198	4/248	4/248	4/313

V free = V_k